



Beaufort County
Public Works
Stormwater Infrastructure
Project Summary

Project Summary: Wimbee Landing Road Channel #1

Activity: Routine/Preventive Maintenance

Narrative Description of Project:

Project improved 5,990 L.F. of drainage system. Cleaned out 5,990 L.F. of channel.

Completion: Jan-15

2015-567 / Wimbee Landing Rd Ch #1	Labor Hours	Labor Cost	Equipment Cost	Material Cost	Contractor Cost	Indirect Labor	Total Cost
AUDIT / Audit Project	0.5	\$10.23	\$0.00	\$0.00	\$0.00	\$6.62	\$16.85
HAUL / Hauling	10.0	\$216.30	\$107.00	\$42.08	\$0.00	\$144.20	\$509.58
ODCO / Channel - cleaned out	20.0	\$457.40	\$84.62	\$28.93	\$0.00	\$308.25	\$879.20
2015-567 / Wimbee Landing Rd Ch #1	30.5	\$683.93	\$191.62	\$71.01	\$0.00	\$459.06	\$1,405.62
Sub Total							
Grand Total	30.5	\$683.93	\$191.62	\$71.01	\$0.00	\$459.06	\$1,405.62

Before



During



After



Project: Wimbee Landing Road Channel 1

Activity: Routine/ Preventive Maintenance

Project #: 2015-567

Township: Sheldon

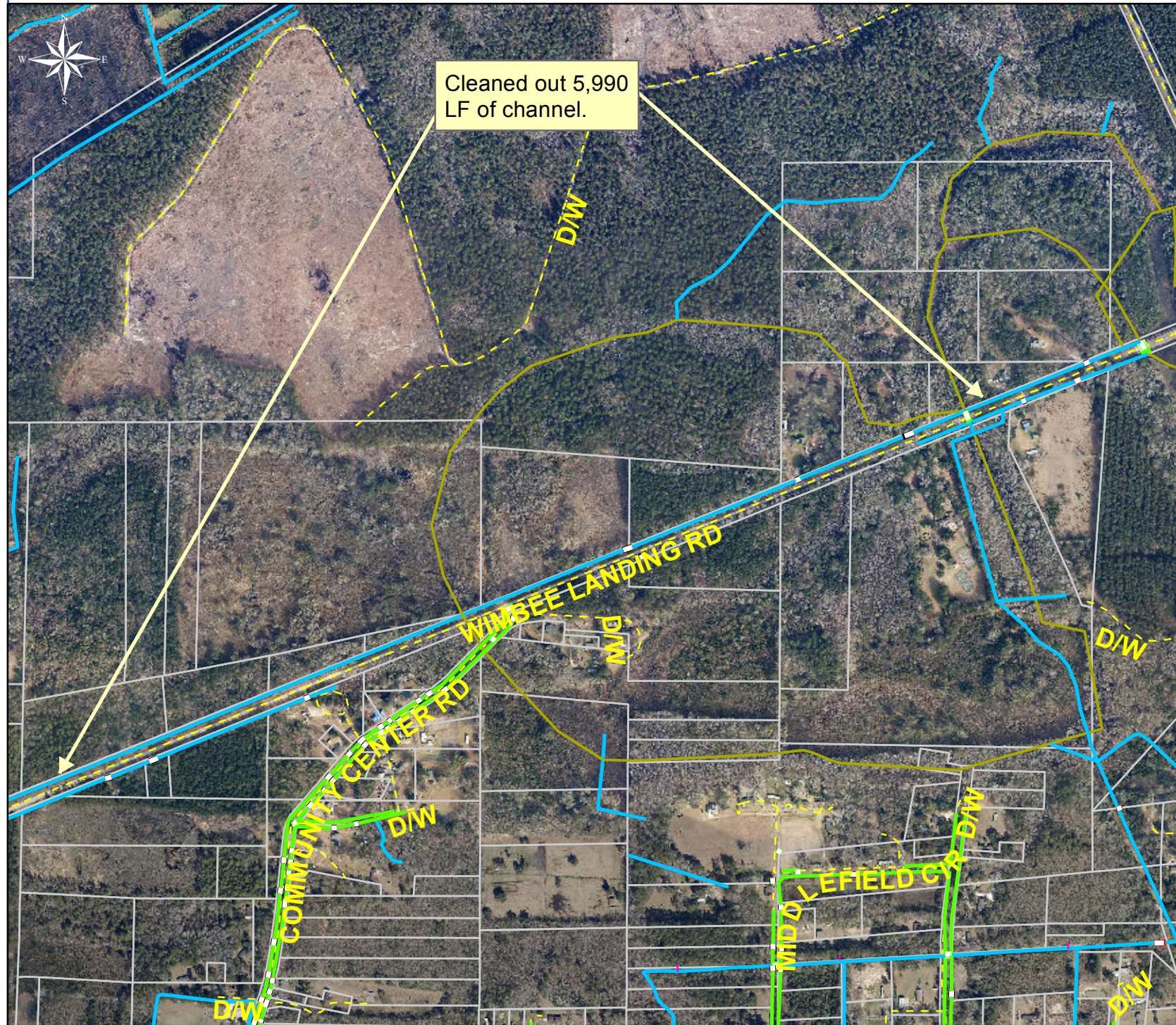
Completed: January 2015

Legend

TYPE

- River
- Creek/Stream
- River/Creek/Marsh BANK
- Channel (fka Outfall)
- Channel Pipe
- Lateral
- Lateral Pipe
- Roadside
- Roadside Pipe
- Road Pipe
- Crossline Pipe
- Driveway Pipe
- Access Pipe
- Bleeder Pipe

Cleaned out 5,990 LF of channel.



1 inch = 770 feet

Prepared By: BC Stormwater Management Utility

Date Print: 1/16/15

File: C:/sethdata/projects/projectmaps/Wimbee Landing Rd 2015-567